

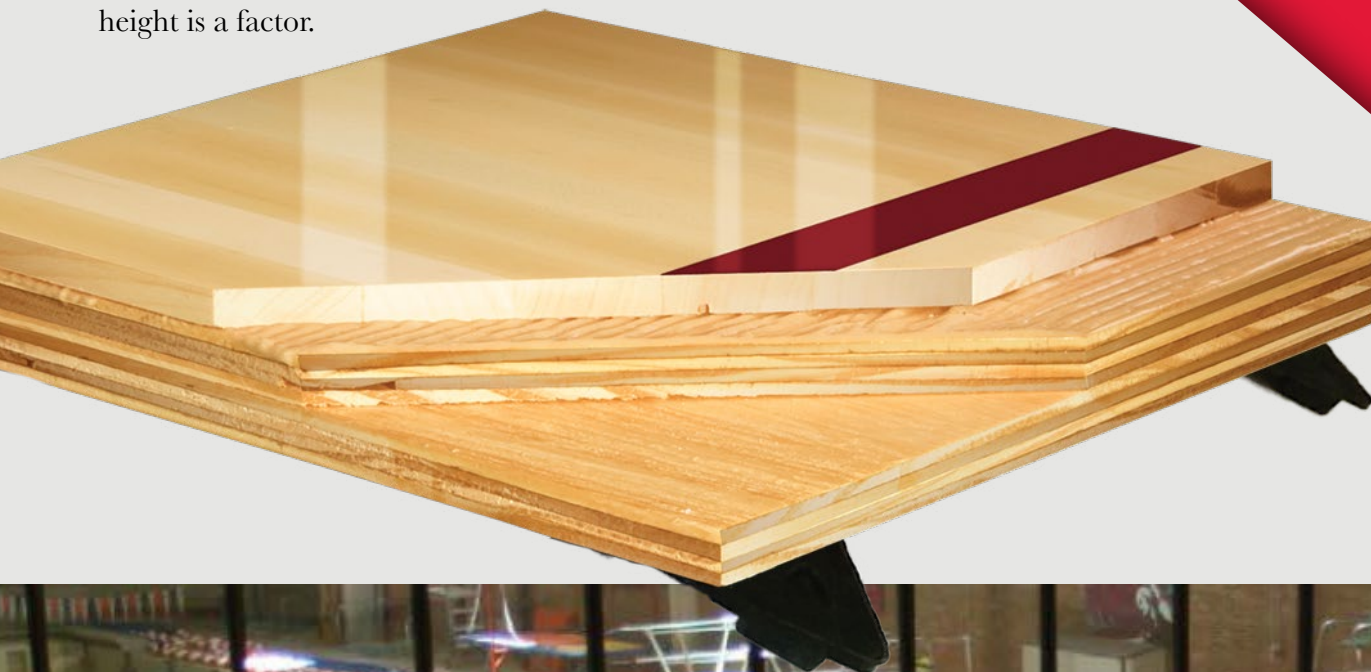
SuperBond Flex™

FLOATING SYSTEMS

SuperBond Flex™ is a mastic set edge-grain maple parquet adhered to a floating subfloor system. Used in sport floor applications where system height is a factor.



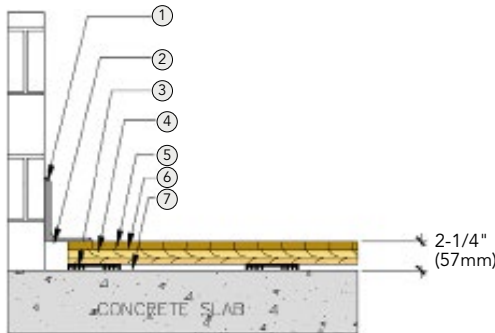
INFINITY
Wood Floors





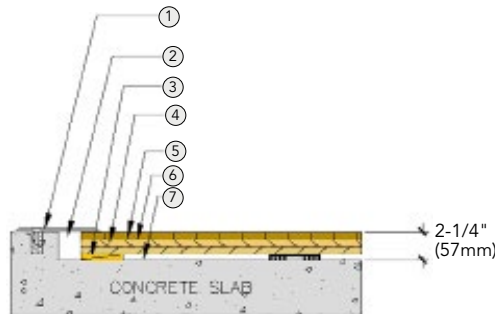
1. 1/2" (12mm) Maple SuperBond™ Flooring
2. Elastomeric Glue
3. (2) Layers of 15/32" (12mm) NOM. Exposure 1, APA Rated Sheathing
4. 3/4" (19mm) TriPower Pads

WALL BASE



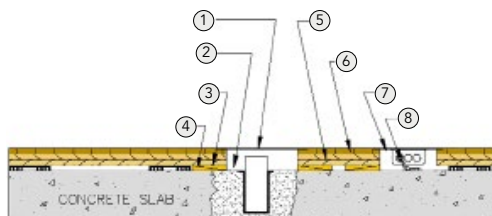
1. 3" x 4" (76mm x 101mm) Vent Cove Base
2. 1 1/2" (38mm) Min. Expansion Space Required
3. 3/4" (19mm) Performance Pad
4. (2) Layers 15/32" (12mm) NOM. Exposure 1, APA Rated Sheathing
5. 7/16" (12mm) MFMA Aacer Maple
6. Elastomeric Glue
7. Vapor Retarder

THRESHOLD



1. 1/4" (6mm) Aluminum Threshold
2. 1 1/2" (38mm) Min. Expansion Space Required
3. Solid Blocking
4. (2) Layers 15/32" (12mm) NOM. Exposure 1, APA Rated Sheathing
5. 7/16" (12mm) MFMA Aacer Maple
6. Elastomeric Glue
7. Vapor Retarder

EQUIPMENT



1. Floor Plate
2. 1 1/2" (38mm) Min. Expansion Space Required
3. Solid Blocking at Floor Insert Penetrations
4. Vapor Retarder
5. (2) Layers 15/32" (12mm) NOM. Exposure 1, APA Rated Sheathing
6. 1/2" (12mm) MFMA Aacer Maple
7. Flush Electrical Box or Scorer's Box
8. Flexible Conduit

Certified



Green Status and LEED Contributors



- FSC® Certified Maple - MRc7
- FSC® Certified Subfloor Components - MRc7
- EQ - 4.2
- Regional Materials - MRc5.1 & 5.2

Resilience

3/4" (19mm) TriPower™ Pads
*Other pad options available.

Slab Depression

3/4" (19mm) TriPower Pads
• 7/16" (12mm) flooring - 2 1/4" (57mm)

Subfloor Construction

Plywood

System Type

Floating

Testing Laboratory Partners



It is the policy of Infinity Wood Floors to continuously improve its line of products. Therefore, Infinity Wood Floors reserves the right to change, modify or discontinue systems, specifications and accessories of all products at any time without notice or obligation to purchaser.